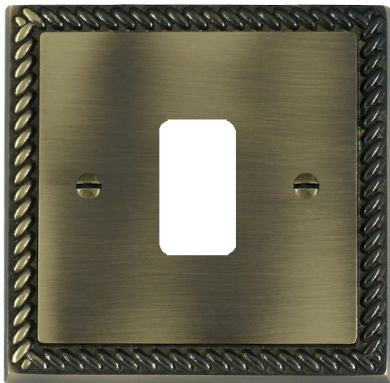


Code: 911GP
Cheriton Georgian | CHERITON GEORGAIN RANGE | GRID-IT Grid Fix Apertured Plates
complete with Fixing Grid

Product Image



Wiring

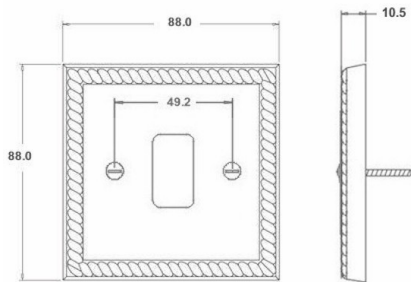


Dimensions

Hamilton®
CHERITON GEORGIAN

1GP

Single plate with 1 x GRID-IT cutout



Insert Type	1 gang Grid Fix Aperture Plate with Grid
Insert Colour	N/A
EAN13 Barcode	5017504088538
Commodity Code	74192000
Luckins TSI	405687918
ETIM Class	EC000007
Dimensions(Nominal)	Single: Height = 88.0mm Width = 88.0mm Depth = 10.5mm
Fixing Hole Centres	Box Fixing = 60.3mm Grid Fixing = 49.2mm
Minimum Wall Box Depth	As Per Insert
Switched Poles	N/A
Current Rating	n/a
IP Rating	N/A
Contact Gap Minimum	N/A
Earth Terminal Capacity 1	11mm²
Product Class 1	Face plate must be earthed
Recommended Location	Internal Use Only
Maximum Installation Altitude	2000m
Standard/Approval	N/A
Additional Notes	See GRID-IT for a full range of inserts. Plates must be Earthed via the Earth Tag.
Patents And Trade Marks	Cheriton is a Registered Trade Mark No. 2344779

R Hamilton & Co Ltd, Unit 10 Carrick Business Centre,
4-5 Bonville Road, Brislington, Bristol, BS4 5NZ

T: +44 (0)1747 860088

E: info@hamilton-litestat.com | W: www.hamilton-litestat.com

(WEB)

All accessories are manufactured under an accredited BS EN ISO 9001:2015 Quality Management System. It is the policy of the company to improve products as part of our development programme. Therefore, we reserve the right to alter designs and dimensions without prior notice. Illustrations and diagrams are reproduced within the limitations of reproduction and printing process and are not binding. Due to manufacturing processes we cannot guarantee an exact colour match and shadings of certain finishes. This datasheet was generated on 26/04/2024 E&OE